

MOTO-MASTER.COM

MOUNTING & SAFETY INSTRUCTIONS

RMC

RADIAL MASTER CYLINDER



SPARE PARTS

Moto-Master offers spare parts to keep your Master Cylinder in perfect working condition. Check the product numbers of the available spare parts below:

213134 RMC Reservoir cap	213017 Single banjo bolt (incl. 2x copper washer)
213135 RMC Lever	213118 Race Drilled single banjo bolt (incl. 2x copper washer)
213136 RMC Pressure pin	213007 Double banjo bolt (incl. 3x copper washer)
213137 RMC Bleeder screw and dust cap	213002 Brake light switch
213138 RMC Piston/seal overhaul kit 12mm	
213139 RMC Reservoir kit	



Moto-Master Europe BV
Phone +31 497 684 036
E-mail info@moto-master.com

MOTO-MASTER.COM



GENERAL WARNING: Consult a certified dealer or professional mechanic if you are not fully qualified in motorcycle maintenance. Moto-Master cannot be held accountable or responsible for any damage or injury caused by incorrect product mounting, disregarding specifications and these instructions, or product mounting by an unqualified third party.

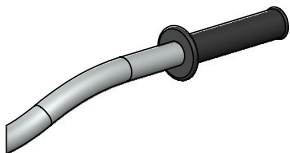
THANK YOU FOR PURCHASING THIS MOTO-MASTER QUALITY PRODUCT.

Moto-Master represents one of the finest lines of replacement and high performance brake systems available.

MOUNTING & SAFETY INSTRUCTIONS

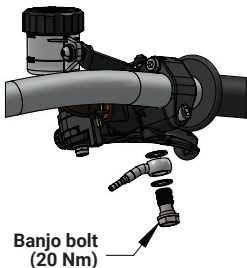
STEP 1

Remove existing master cylinder with brake line from the handlebar. Clean master cylinder mounting surface on the handlebar. Avoid spilling brake fluid.



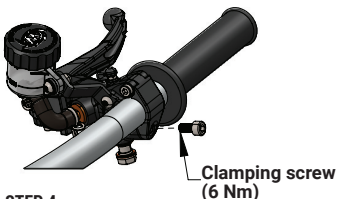
STEP 3

Install brake line as depicted; Using the banjo bolt and placing the brake line fitting in between two copper washer rings. Torque tighten the banjo bolt at 20Nm.



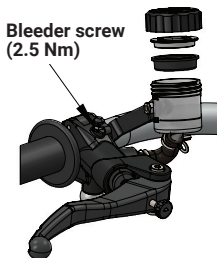
STEP 2

Install the Moto-Master Radial Master Cylinder and make sure the bleeder screw is positioned at the highest point. Level the brake fluid reservoir horizontally and fasten the bolt of the master cylinder clamp. The final angle of the master cylinder can be adjusted after bleeding.



STEP 4

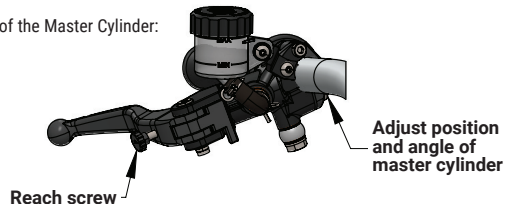
Check the front brake pads for wear and replace if necessary. Remove the reservoir cap and bellows. Fill the reservoir with DOT 4 or DOT 5.1 brake fluid from a sealed container. Actuate the brake lever and keep the fluid level between the MIN and MAX-mark on the reservoir. Thoroughly bleed the brake system of all air using the bleeder screw on the brake caliper and on the master cylinder.



STEP 5

Adjust the position and angle of the master cylinder. Set the lever position with the reach screw to your preference.

Fine-tuning of the Master Cylinder:



IMPORTANT INFO

Never use DOT 5 brake fluid or mineral oil, the brake system is not designed for it.

Avoid contact between brake fluid and painted parts. Check for free travel of the brake lever, pressure builds up in the brake system if there is no free travel. This can result in failure due to overheating. Check the brake fluid level of the reservoir before every ride. If the brake fluid level drops below the MIN-mark there can be a leak in the brake system, or the brake pads and/or disc are worn down. Stop riding and inspect the complete brake system. Change the brake fluid regularly according to your service schedule. Use only brake fluid from a sealed container.

